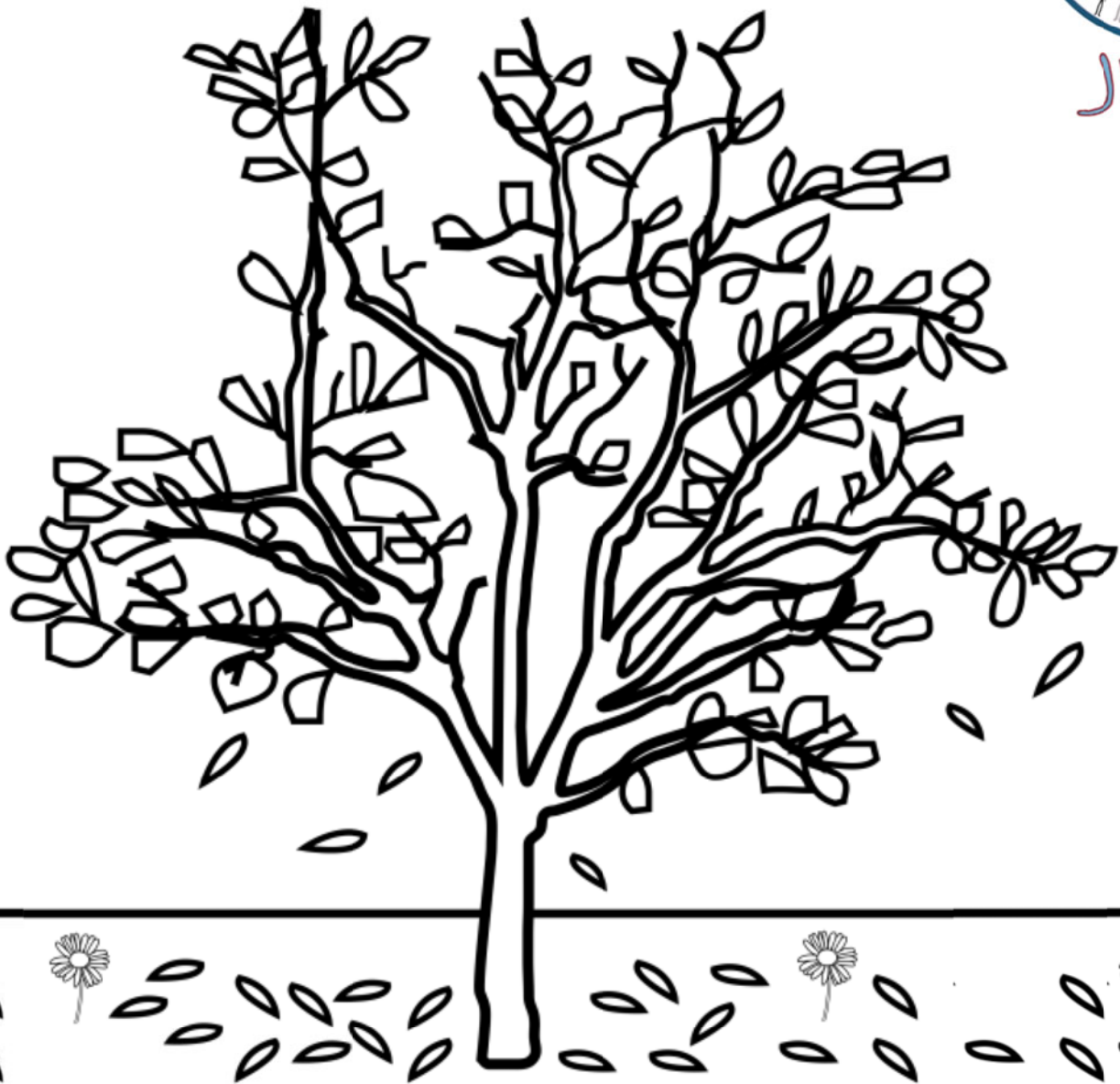


E'	mattina	l'	Ape Tina	si sveglia

E'	freddo	:

ci	sono	le	nuvole	e	tira	il	vento	.



L' 	Ape Tina 	vede 	gli 	alberi
--------	--------------	----------	---------	------------

senza 	foglie
-----------	------------

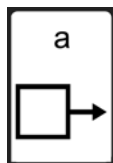
.

L' 	Ape Tina 	vede 	pochi 	fiori
--------	--------------	----------	-----------	-----------

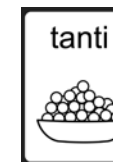
.



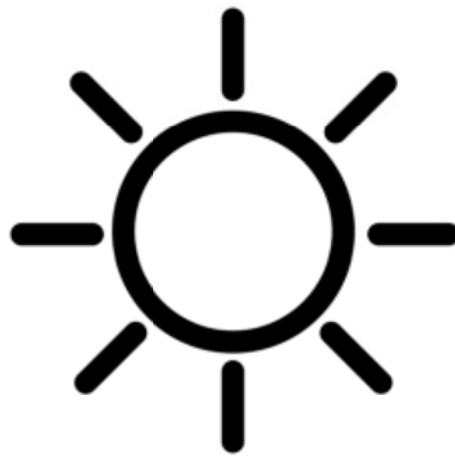
.



.



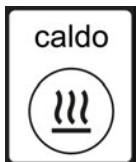
.



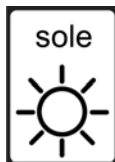
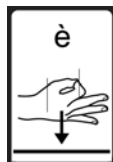
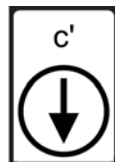
.



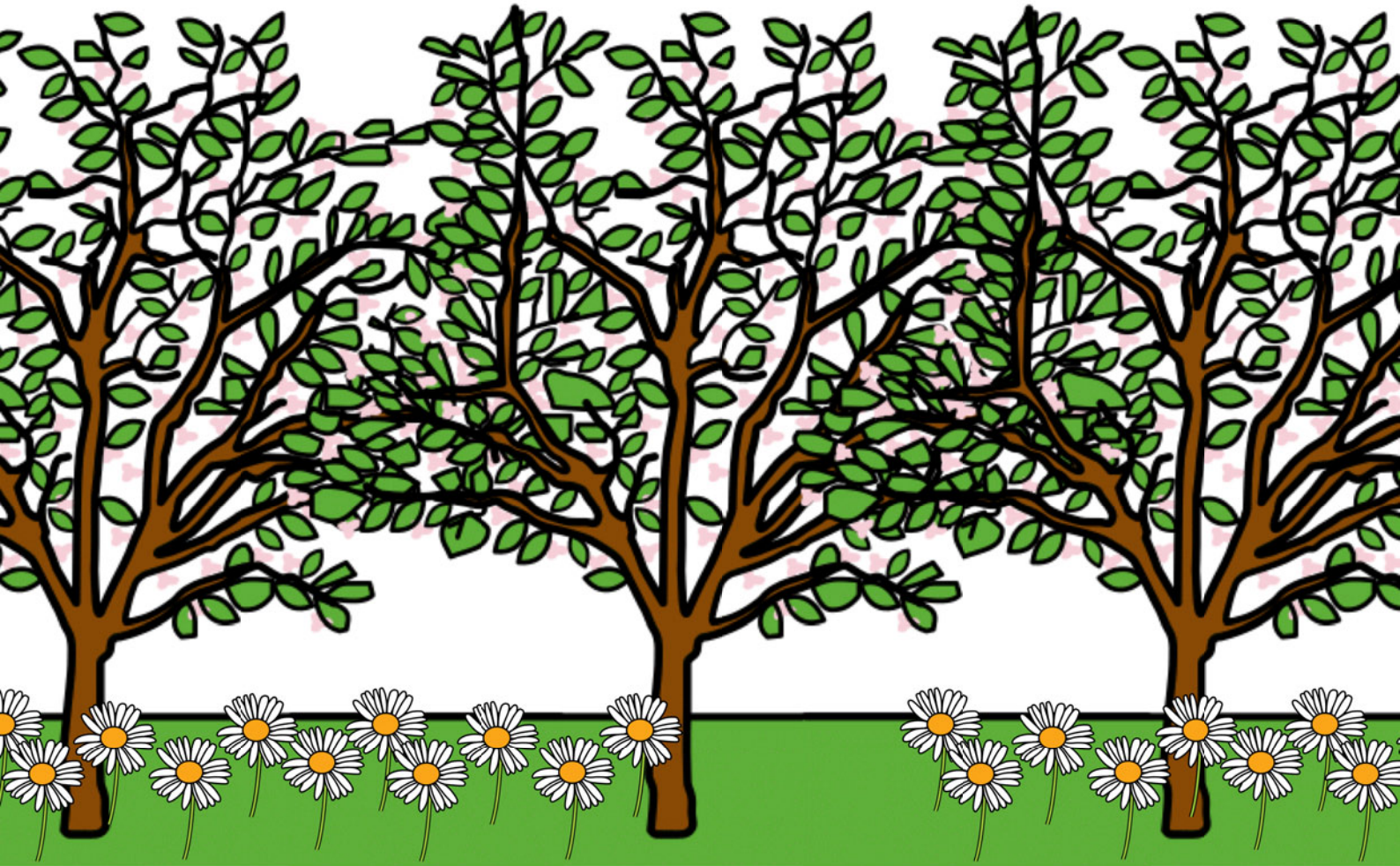
.








:








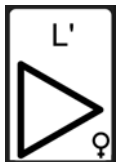
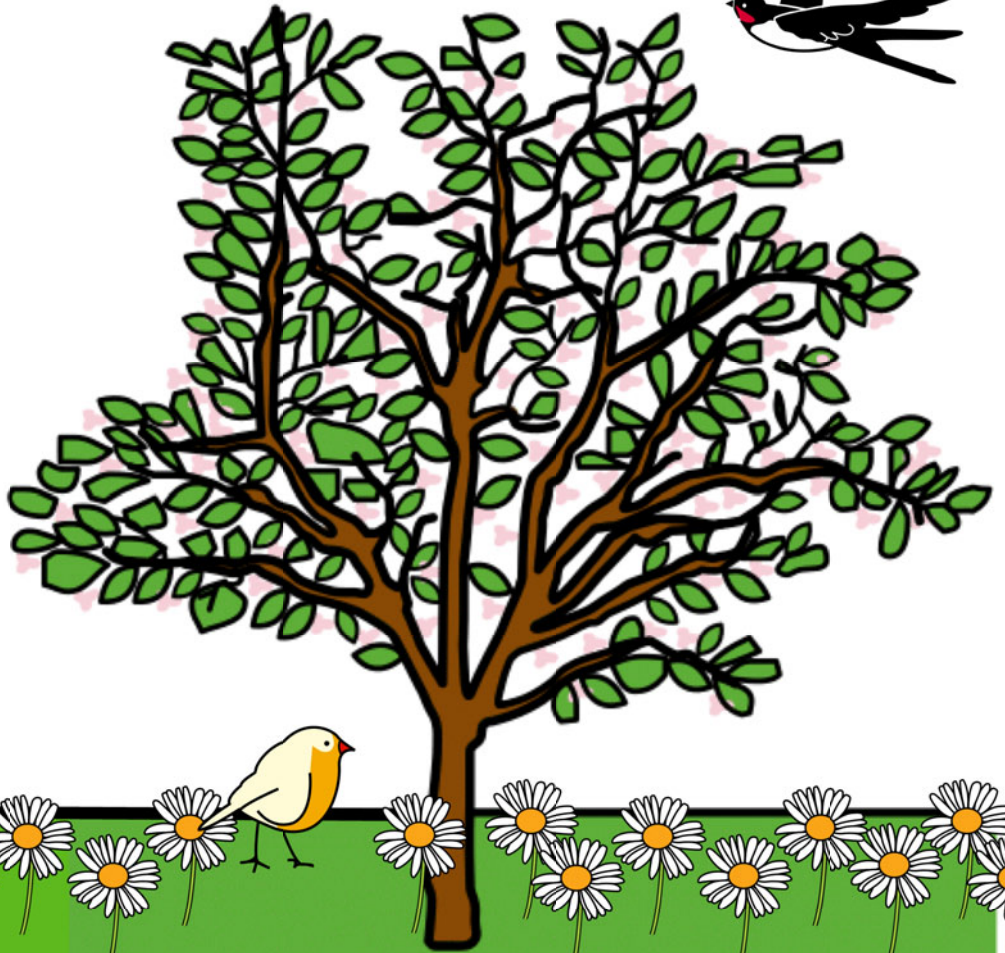
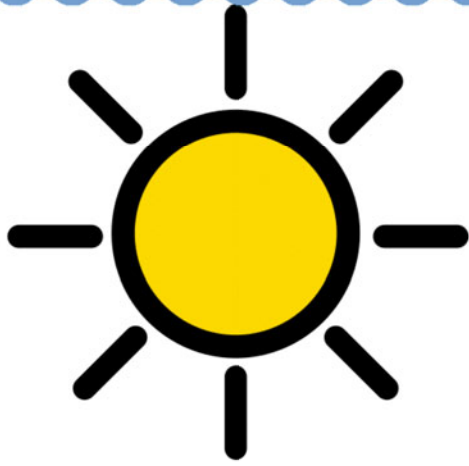
.



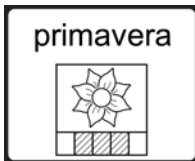
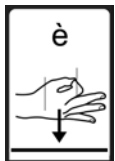
L' 	Ape Tina 	vede 	gli 	alberi 
--	---	---	--	---

con 	tante 	foglie 	.
---	--	---	---

L' 	Ape Tina 	vede 	tanti 	fiori 	.
--	---	---	--	--	---

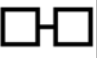





:



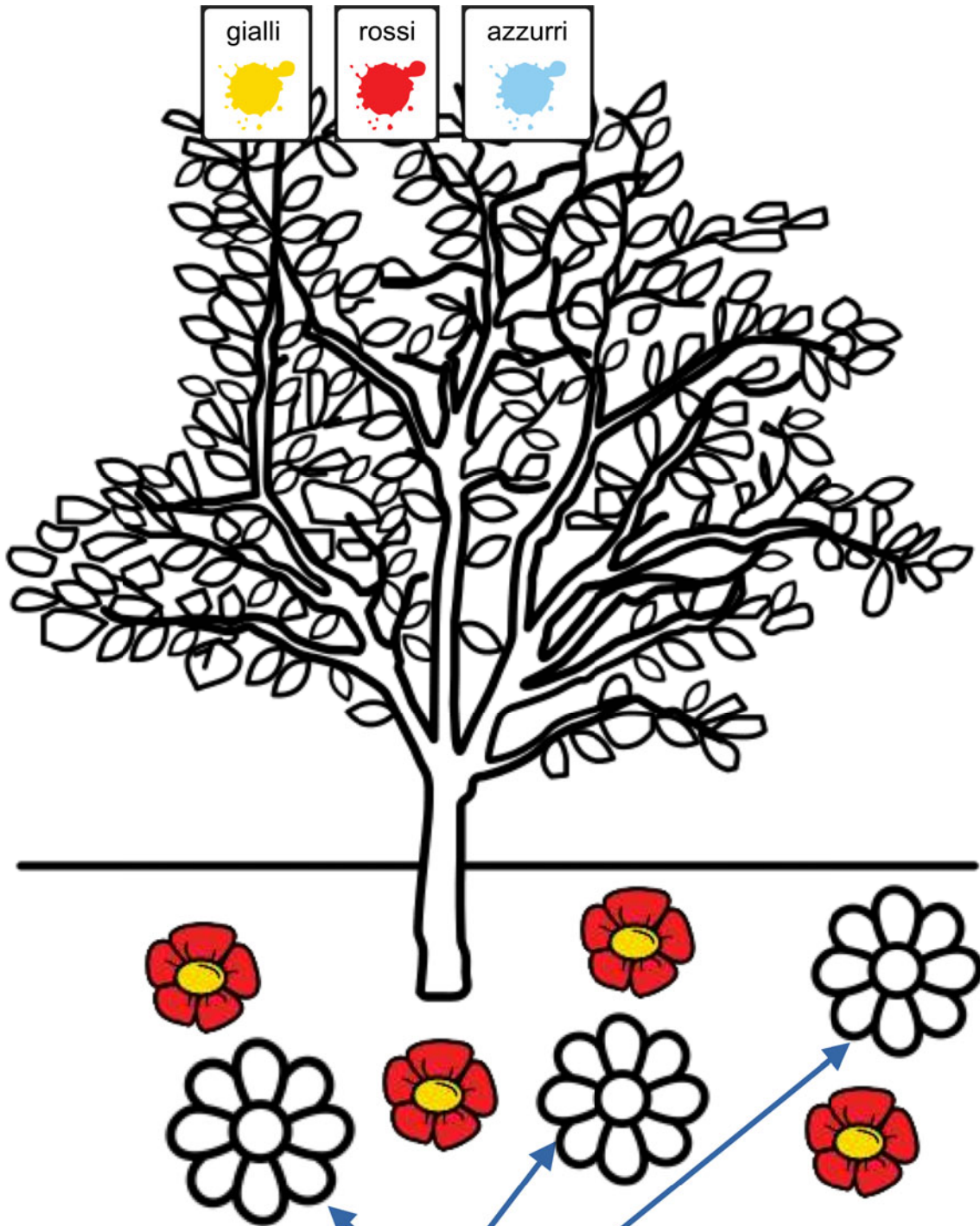
!

Colora 	l' 	Ape Tina 	di 	giallo 
---	---	---	--	---

con 	le 	ali 	azzurre 
--	---	--	---



Di che colore sono i fiori ?




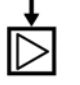
gialli rossi azzurri


Colora i fiori di rosa

Quanti
1 2 3

uccellini⁺


sono


sui


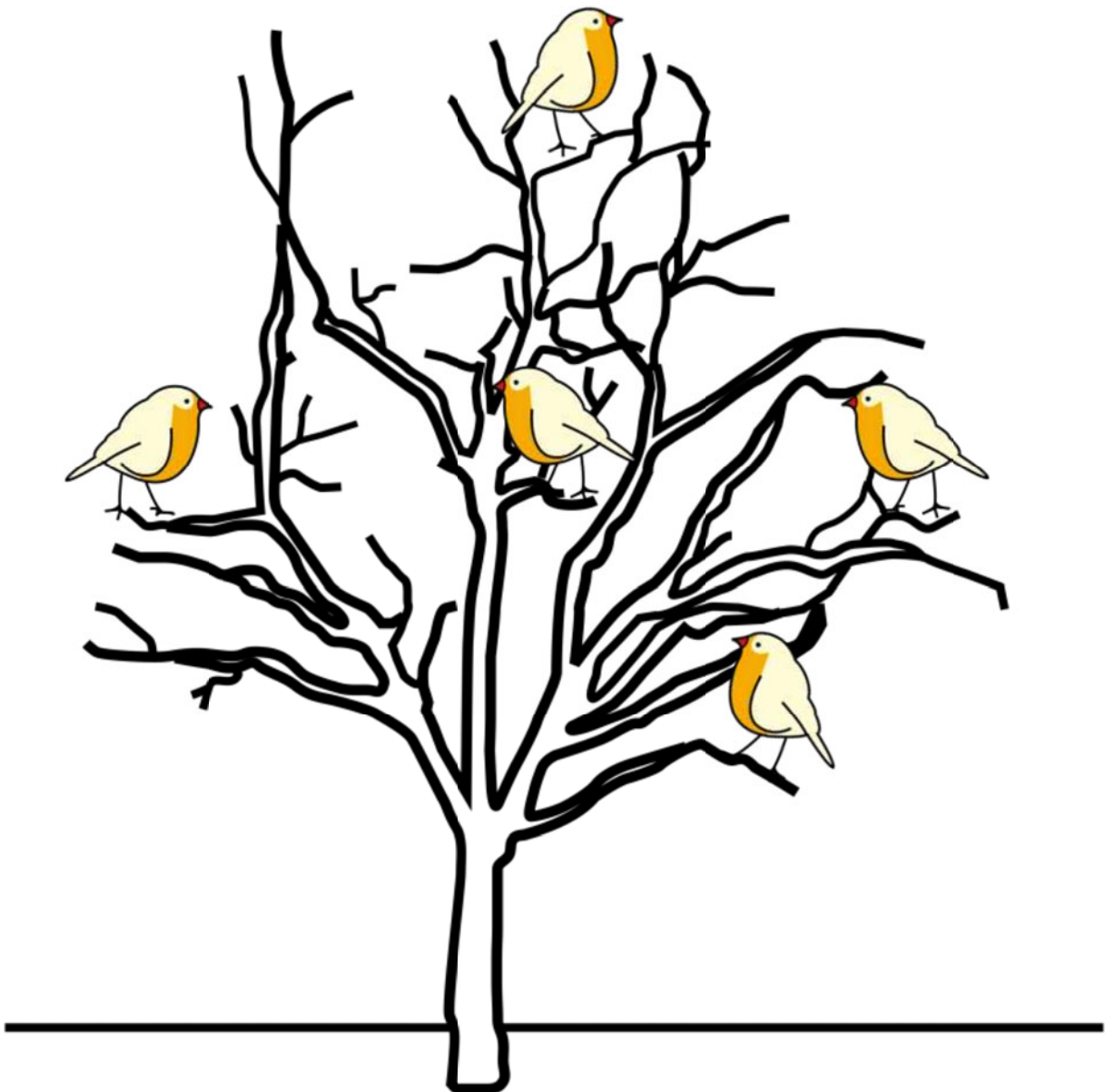
rami⁺


?

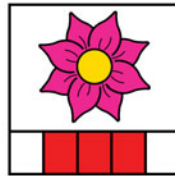
numero
1

numero
3

numero
5



<p>Scegli</p>	<p>le</p>	<p>parole casa + amor mano</p>	<p>della</p>	<p>primavera</p>
---------------	-----------	--	--------------	------------------



NEVE

SOLE

CALDO

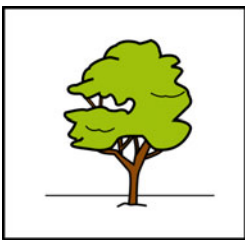
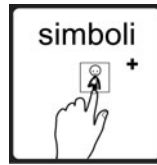
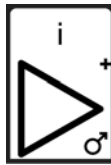
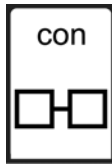
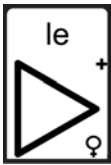
FREDDO

FIORI

ALBERO SENZA
FOGLIE

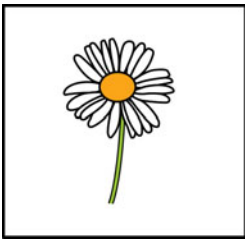
ALBERO CON LE
FOGLIE

UCCELLINI



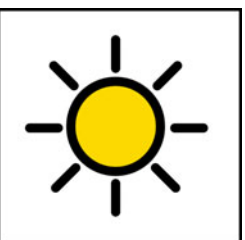
A

pe



So

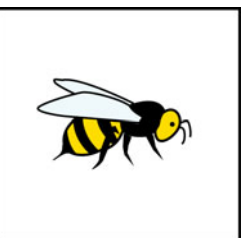
le



Al

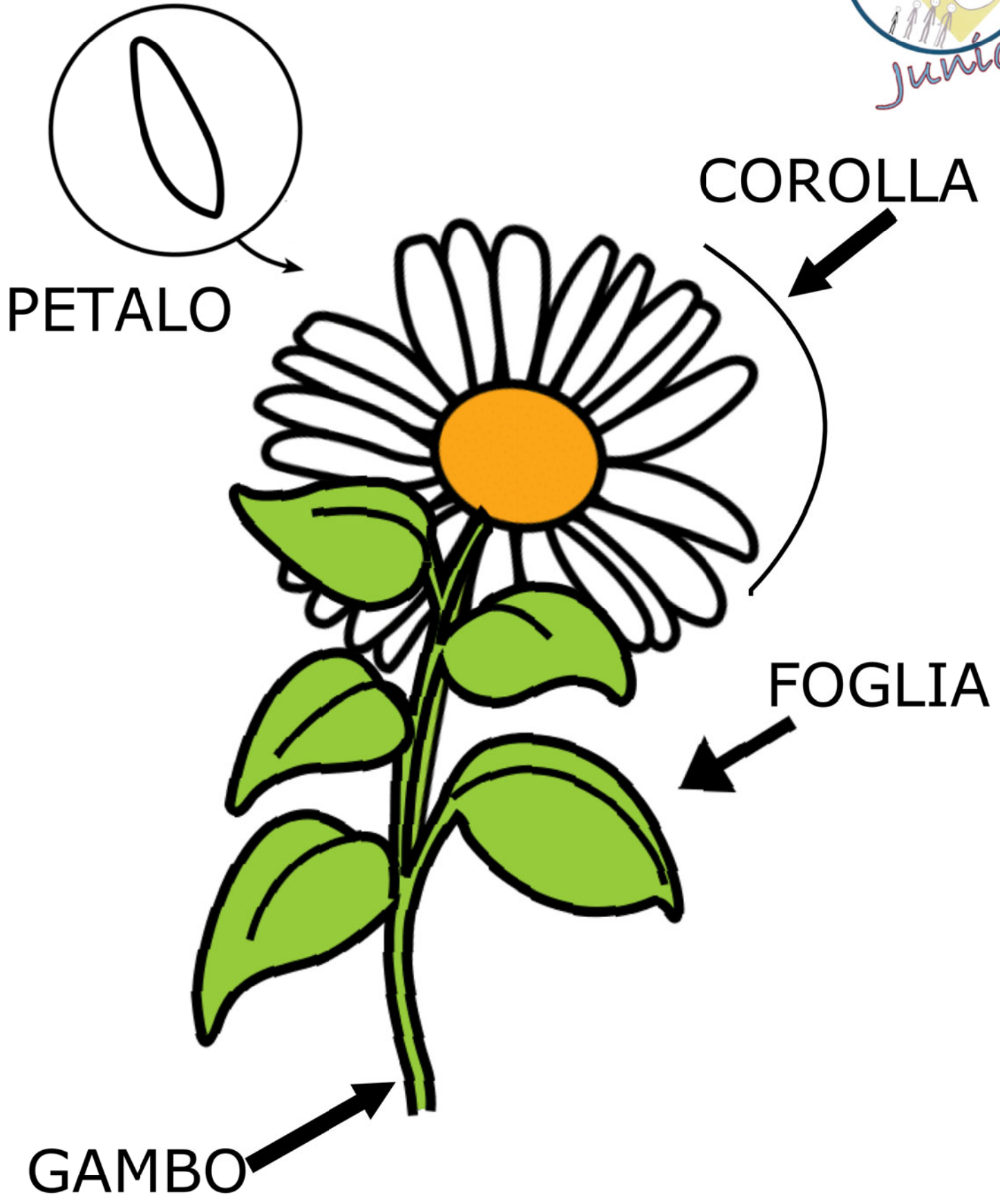
be

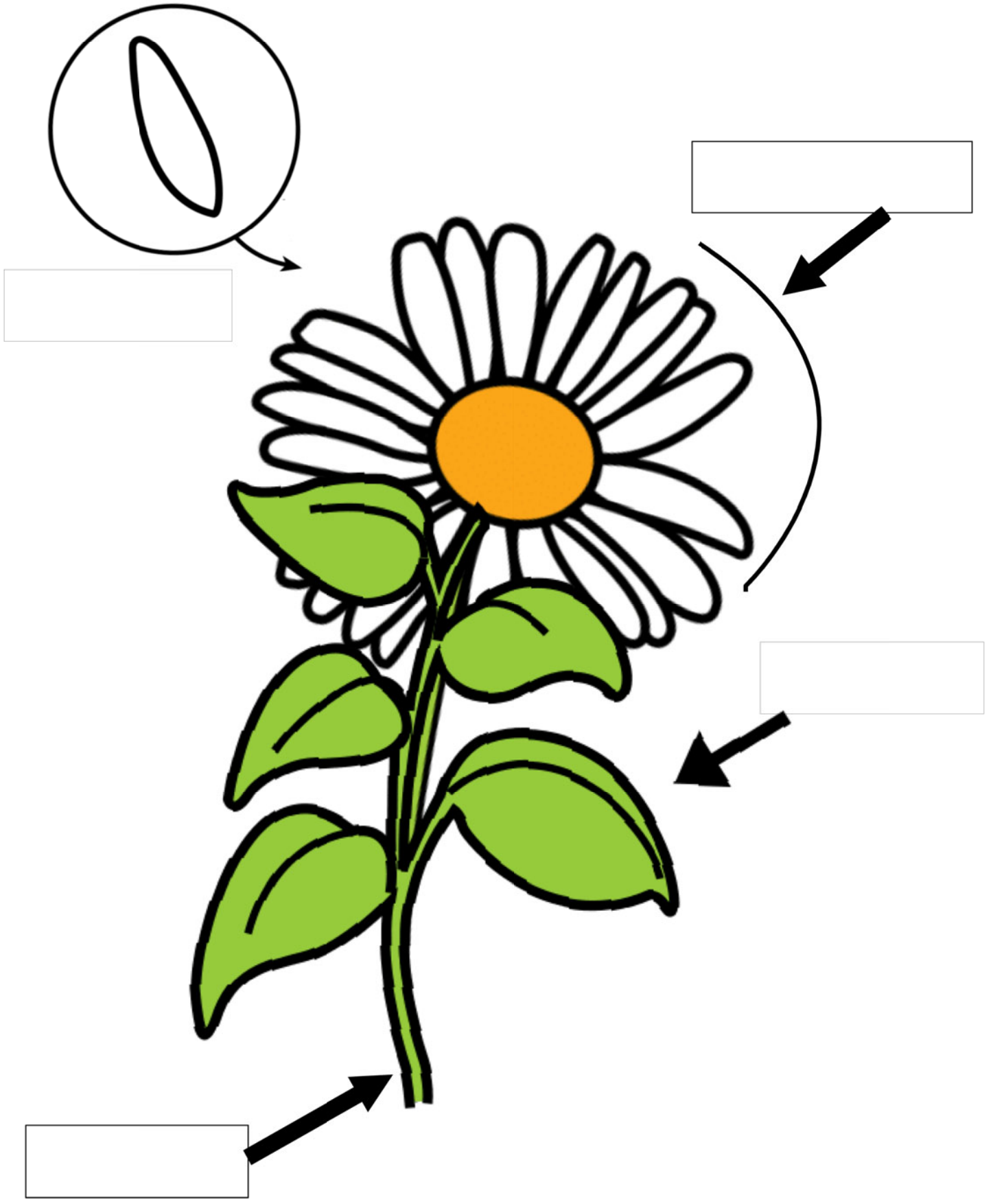
ro



Fio

re





Descrivi

il

fiore

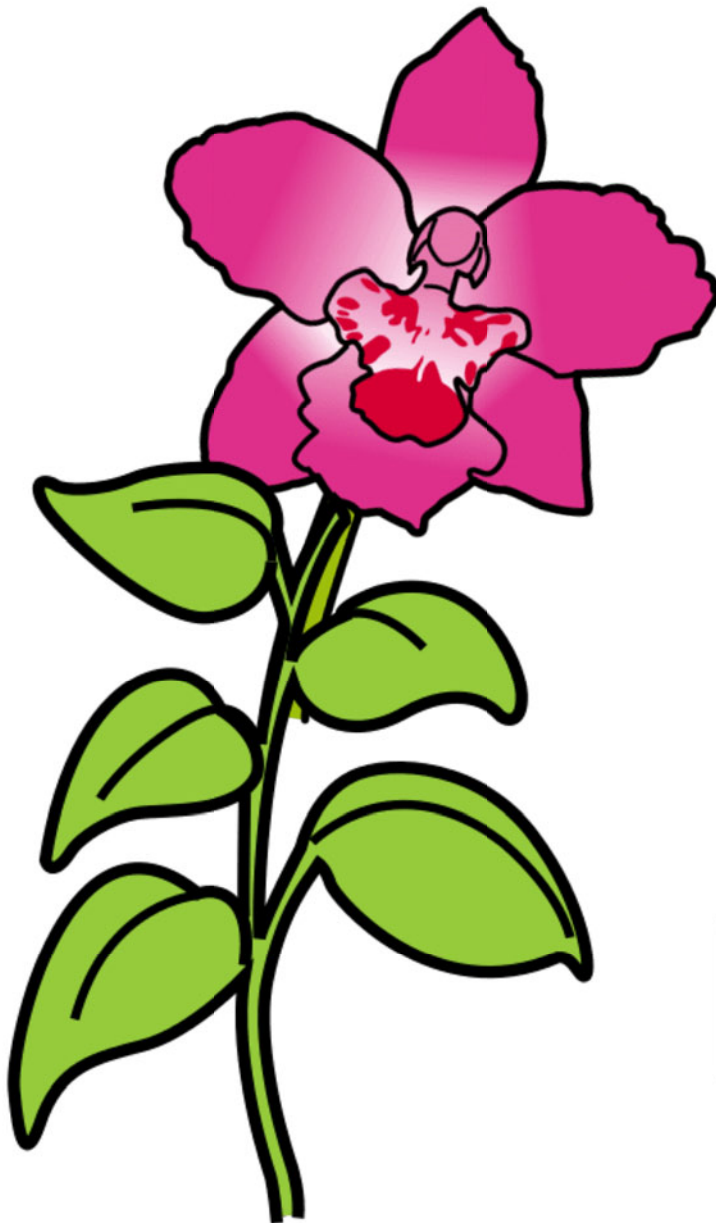
i

petalo

sono

rosa

azzurri



Le

foglie

sono

gialle

verdi

Il

gambo

è

lungo

corto

